

# aiwa

JAPANESE ENGINEERING SINCE 1951

## ESTBT-450

USER MANUAL **EN**

MANUAL DE USUARIO **ES**

MODE D'EMPLOI **FR**

BEDIENUNG-SANLEITUNG **DE**

MANUALE DELL'UTENTE **IT**

+14

### WIRELESS NECKBAND QUAD DRIVER IN-EARPHONE

# aiwa

JAPANESE ENGINEERING SINCE 1951

Follow us! aiwaEU



www.eu-aiwa.com

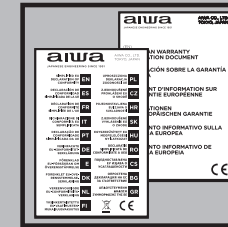
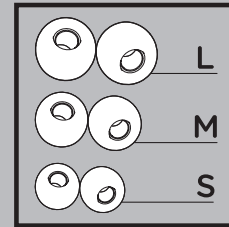
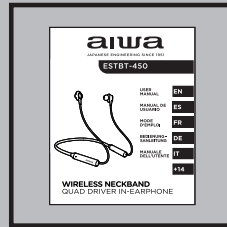
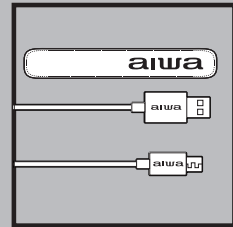
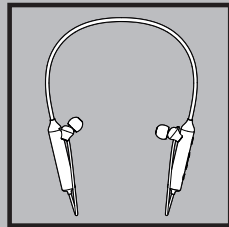
AIWA CO., LTD.  
Shinagawa-Ku  
TOKYO 141-0022, JAPAN



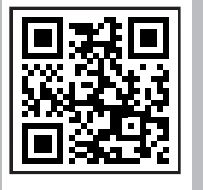
EFO2A0615V.1

Printed in P.R.C.

## 01. ACCESSORIES

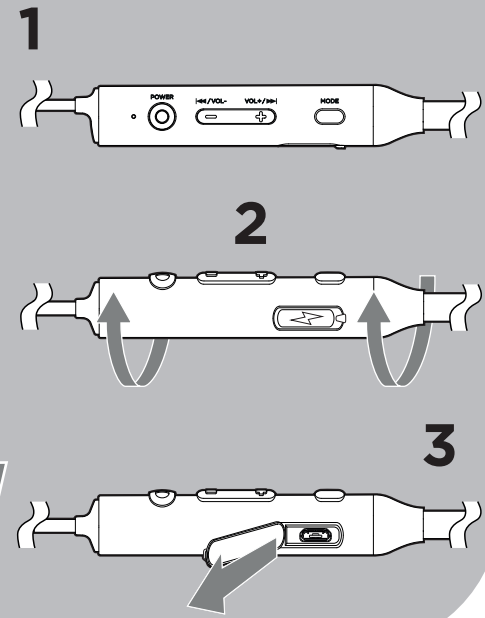
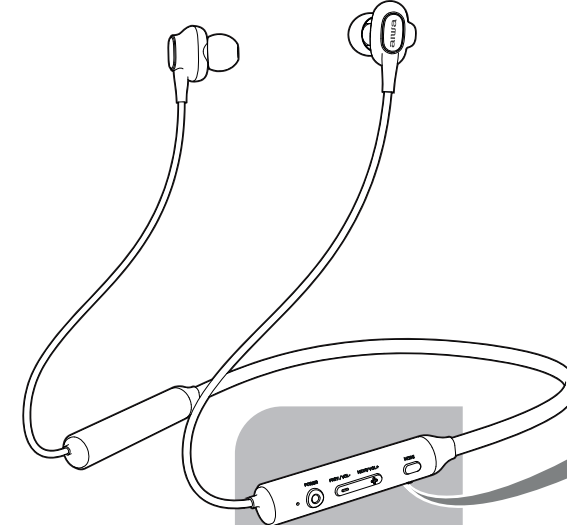
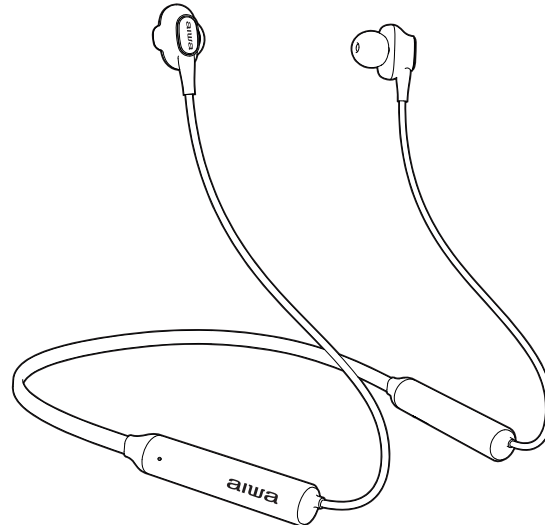
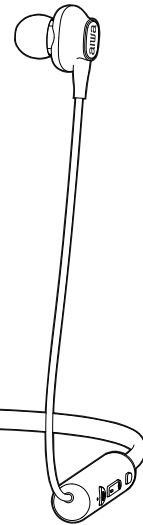
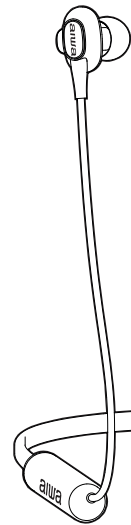


## + aiwa

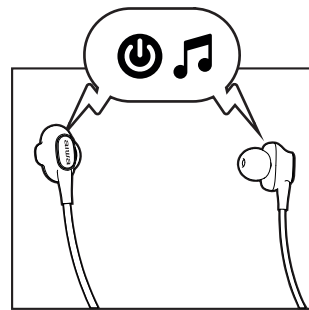
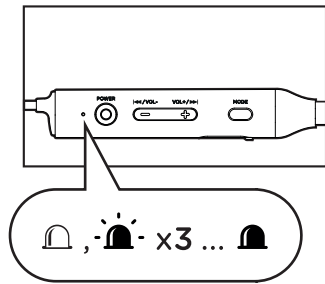
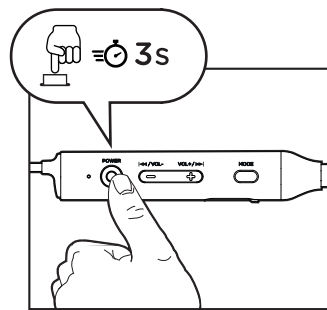


www.aiwa\_europe.com

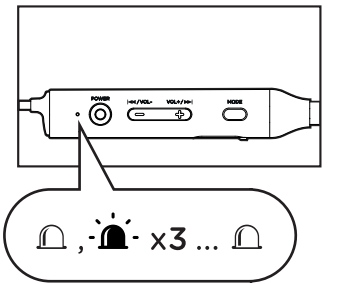
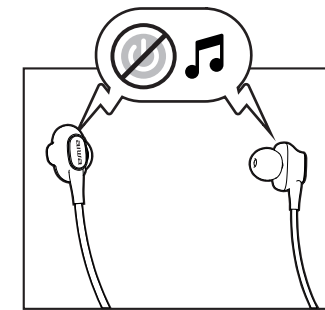
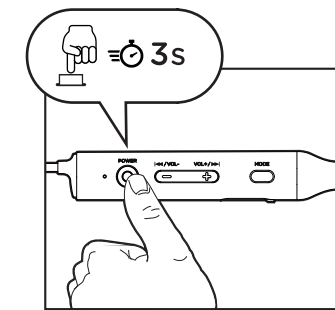
## 02. OVERALL VIEW



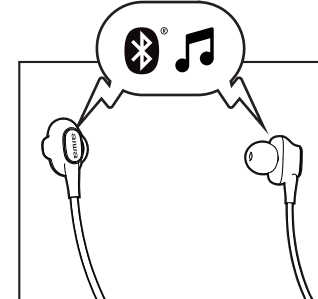
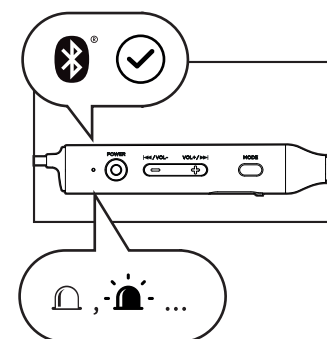
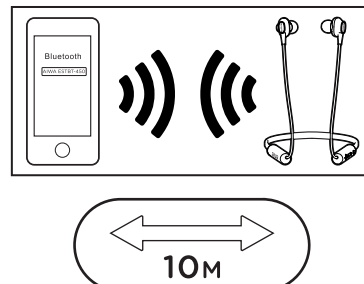
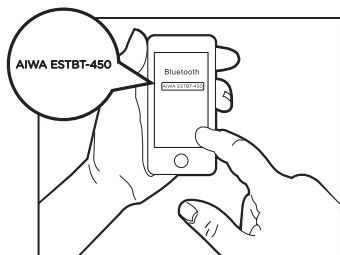
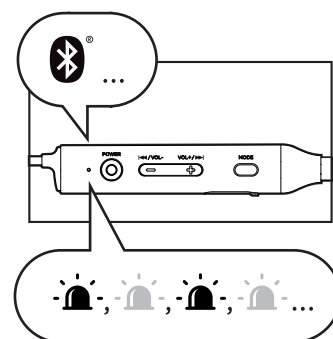
## 03. TURN ON



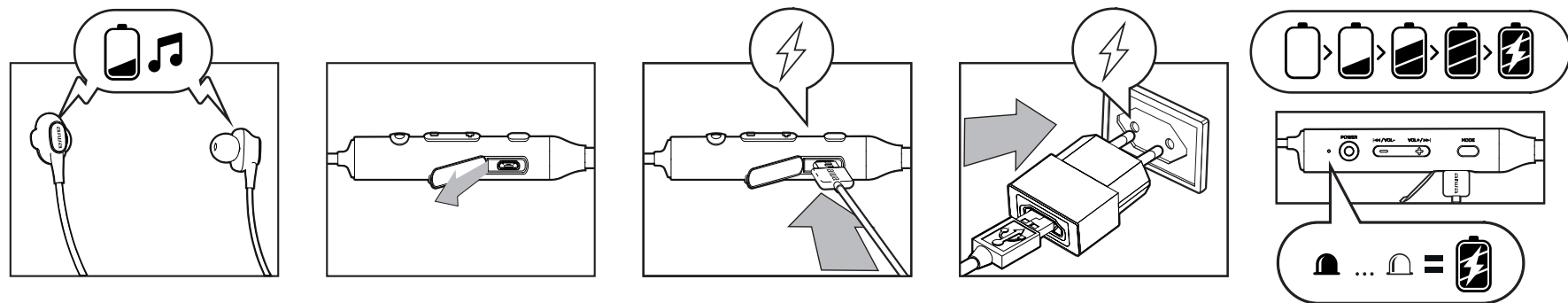
## 04. TURN OFF



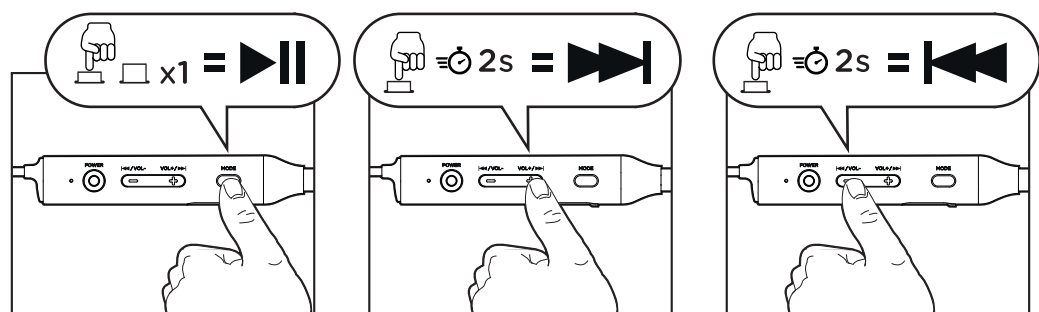
## 05. BLUETOOTH FUNCTION



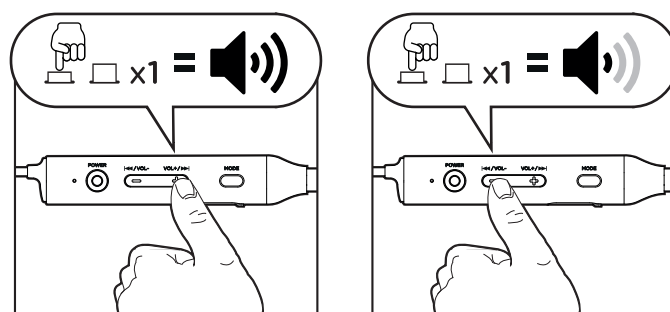
## 06. BATTERY CHARGE



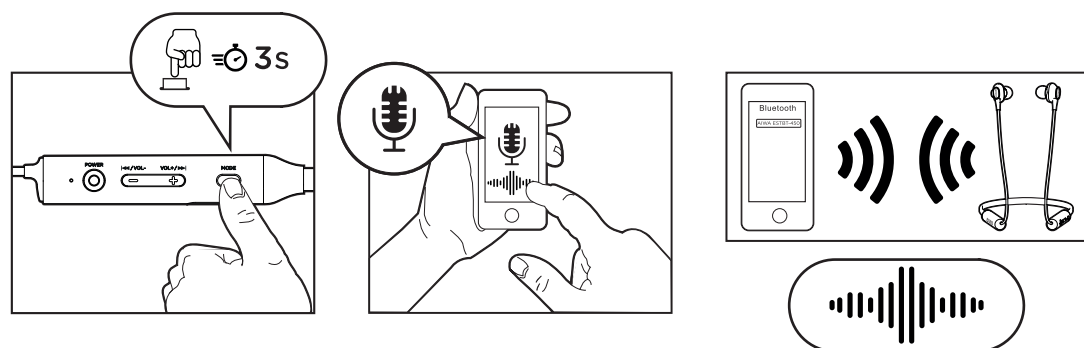
## 07. MUSIC PLAYBACK



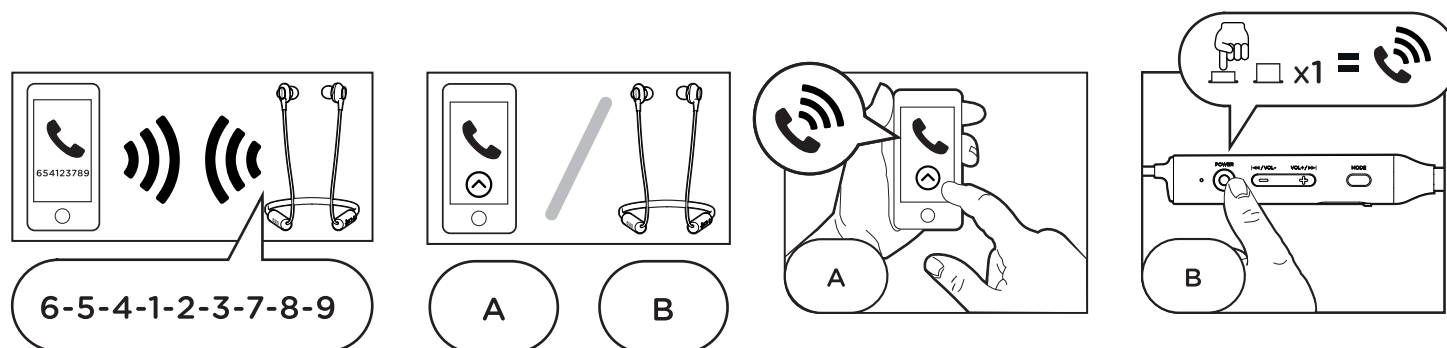
## 08. VOLUME ADJUSTMENT



## 09. VOICE ASSISTANT



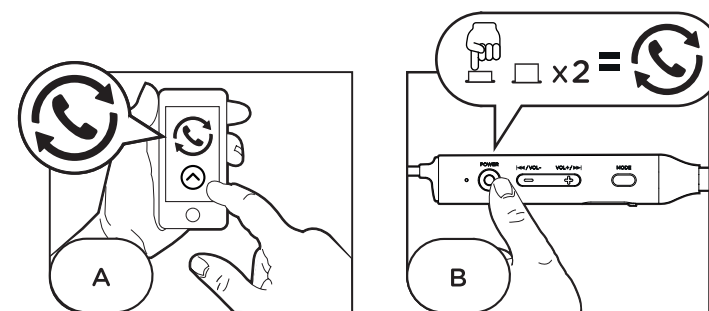
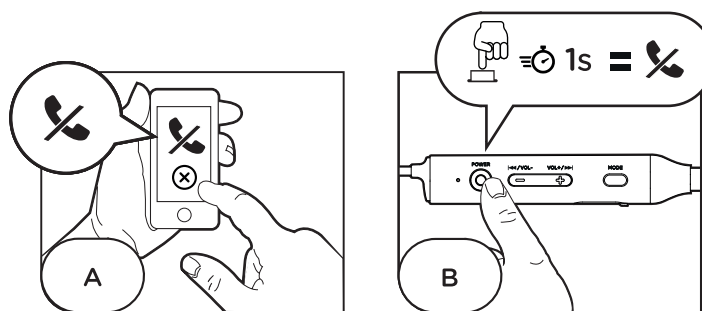
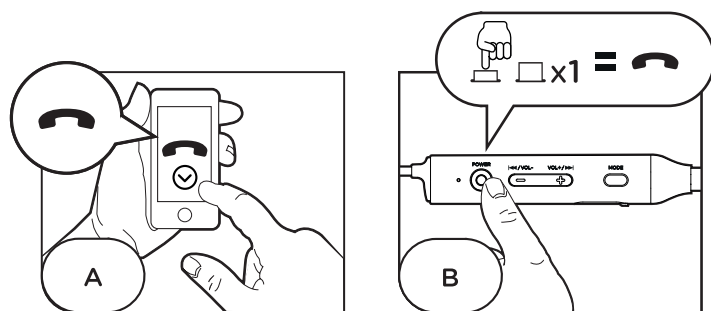
## 10. ANSWER AN INCOMING CALL



## 11. HANG UP AN INCOMING CALL

## 12. DECLINE AN INCOMING CALL

## 13. REDIAL THE LAST NUMBER



ES- 01.Accesorios. 02.Vista general. 03.Encender. 04.Apagar. 05.Función Bluetooth. 06.Carga de la batería. 07.Reproducción de música. 08.Volumen. 09.Asistente de voz. 10.Responder llamada. 11.Colgar llamada. 12.Rechazar llamada. 13.Rellamar al último número.  
FR- 01.Accessoires. 02.Vue d'ensemble. 03.Allumer. 04.Arrêt. 05.Fonction Bluetooth. 06.Charge de la batterie. 07.Lecture de la musique. 08.Volume. 09.Assistance vocale. 10.Répondre à l'appel. 11.Raccrochez l'appel. 12.Rejeter l'appel. 13.Recomposez le dernier numéro.  
IT- 01.Accessori. 02.Vista generale. 03.Accendere. 04.Spegnere. 05.Funzione Bluetooth. 06.Caricare la batteria. 07.Suonare musica. 08.Volume. 09.Assistente vocale. 10.Rispondi alla chiamata. 11.Riaggancia la chiamata. 12.Rifiuta la chiamata. 13.Chiami l'ultimo numero.  
PT- 01.Acessórios. 02.Visão geral. 03.Ligar. 04.Desligar. 05.Funcção Bluetooth. 06.Carregamento da bateria. 07.Reprodução de música. 08.Volume. 09.Assistente de voz. 10.Atender chamada. 11.Rejeitar chamada. 13.Ligue para o último número.  
DE- 01.Zubehör. 02.Allgemeine Ansicht. 03.Einschalten. 04.Ausschalten. 05.Bluetooth-Funktion. 06.Aufladen der Batterie. 07.Musik abspielen. 08.Lautstärke. 09.Sprachassistent. 10.Anruf entgegennehmen. 11.Legen Sie den Anruf auf. 12.Anruf ablehnen. 13.Letzte Nummer erneut wählen.  
SE- 01.Tillbehör. 02.Översikt. 03.Slä på. 04.Stäng av. 05.Bluetooth-funktion. 06.Batteriladdning. 07.Musik spela. 08.Volym. 09.Röstassistent. 10.Svara på samtal. 11.Avsluta samtal. 12.Avvisa samtal. 13.Återringa det sista numret.  
DK- 01.Tilbehør. 02.Generelt synspunkt. 03.Tænd. 04.Sluk for det. 05.Bluetooth-funktion. 06.Opladning af batteriet. 07.Afspilning af musik. 08.Volumen. 09.Stemmeassistent. 10.Besvar opkald. 11.Afslut opkald. 12.Afvis opkald. 13.Genopkald sidste nummer.  
NL- 01.Toebehoren. 02.Algemeen beeld. 03.Inschakelen. 04.Uitschakelen. 05.Bluetooth-functie. 06.Het opladen van de batterij. 07.Muziek spelen. 08.Volume. 09.Stemassistent. 10.Beantwoord de oproep. 11.Hang op. 12.Afwijzing van de oproep. 13.Bel het laatste nummer.  
FI- 01.Lisälaitteet. 02.Yleiskatsaus. 03.Käynnistä. 04.Sammuta. 05.Bluetooth-toiminto. 06.Akun lataus. 07.Musiikin soittaminen. 08.Tilavuus. 09.Ääniasistentti. 10.Vastaa puheluun. 11.Lopeta puhelu. 12.Hylkää puhelu. 13.Soita viimeinen numero uudelleen.  
PL- 01.Akcesoria. 02.Przegląd. 03.Włącz. 04.Wyłącz. 05.Funkcja Bluetooth. 06.Ładowanie baterii. 07.Odtwarzanie muzyki. 08.Tom. 09.Asystent głosowy. 10.Odbierz połączenie. 11.Zakończ rozmowę. 12.Odrzuć połączenie. 13.Wybierz ponownie ostatni numer.  
CZ- 01.Príslušenství. 02.Přehled. 03.Zapněte. 04.Vypněte. 05.Funkce Bluetooth. 06.Nabíjení baterie. 07.Přehrávání hudby. 08.Svazek. 09.Hlasový asistent. 10.Přijměte hovor. 11.Ukončíte hovor. 12.Odmítnout hovor. 13.Znovu vytočte poslední číslo.  
HR- 01.Pribor. 02.Opći prikaz. 03.Upaliti. 04.Isključiti. 05.Bluetooth funkcija. 06.Punjenje baterije. 07.Sviranje glazbe. 08.Svezak. 09.Glasovni asistent. 10.Javite se na poziv. 11.Završi poziv. 12.Odbij poziv. 13.Ponovno birajte zadnji broj.  
SK- 01.Príslušenstvo. 02.Všeobecný pohľad. 03.Zapnite. 04.Vypnite. 05.Funkcia Bluetooth. 06.Nabíjanie batérie. 07.Prehrávanie hudby. 08.Objem. 09.Hlasový asistent. 10.Prijmite hovor. 11.Ukončíte hovor. 12.Odmietnuť hovor. 13.Znova vytočte posledné číslo.  
HU- 01.Tartozékok. 02.Áttekintés. 03.Kapcsolja be. 04.Kapcsolja ki. 05.Bluetooth funkció. 06.Az akkumulátor töltése. 07.Zene lejátszása. 08.Kötet. 09.Hangsegéd. 10.Hívás fogadása. 11.Hívás befejezése. 12.A hívás elutasítása. 13.Az utolsó szám újrahívása.  
RO- 01.Accesorii. 02.Prezentare generală. 03.Porniți. 04.Opriți. 05.Funcție Bluetooth. 06.Încărcarea bateriei. 07.Joc de muzică. 08.Volum. 09.Raspunde la apel. 10.Raspunde la apel. 11.Terminare apel. 12.Respingeți apelul. 13.Reapelează ultimul număr.  
CS- 01.Додатна опрема. 02.Преглед. 03.Укључи. 04.Искључи. 05.Блуеуотх функција. 06.Пуњење батерије. 07.Свирање музике. 08.Запремина. 09.Гласовни асистент. 10.Одговорите на позив. 11.Прекидање. 12.Одбиј позив. 13.Поновно бирање задњег броја.  
BG- 01.Аксесоари. 02.Преглед. 03.Включете. 04.Изключете. 05.Блуеуотх функција. 06.Зареждане на батеријата. 07.Игра на музика. 08.Обем. 09.Гласов асистент. 10.Вземете повикване. 11.Край на повикване. 12.Отхвърляне на повикване. 13.Повторно набиране на последния номер.  
GR- 01.Αξεσουάρ. 02.Επισκόπηση. 03.Ενεργοποίηση. 04.Απενεργοποίηση. 05.Λειτουργία Bluetooth. 06.Φόρτιση μπαταρίας. 07.Παίζοντας μουσική. 08.Όγκος. 09.Βοηθός φωνής. 10.Απάντηση κλήσης. 11.Τέλος κλήσης. 12.Απόρριψη κλήσης. 13.Επανάκληση τελευταίου αριθμού.